

Goals for Transit



Accessible

Improve access to opportunities and activities for those with limited travel options.



Affordable

Ensure transit options are affordable to the user, accessible and barrier-free.



Sustainable

Realize environmental benefits.



Partnerships

Partner and engage with other organizations to establish a transit solution that works for as many people and destinations as possible.



Flexible

The transit system is flexible and can easily adapt to changing demand, serve different times of day, or serve different destinations.



How Options Were Developed



**Jurisdictional
Scan**



**Stakeholder &
Public Engagement**



**Travel Needs
Assessment**



Phase 2 Engagement | [Online Webinar](#)

How Options Were Developed



Jurisdictional Scan

- Focus on communities with on-demand or hybrid systems to understand new technology.
- 7 communities in Canada including Powell River, BC and Cochrane, AB
- All communities are satisfied with their on-demand or hybrid systems and find them more scalable and adaptable to changing demand



How Options Were Developed



Stakeholder & Public Engagement

- Work and school trips are most important
- West End Commercial area is the key destination
 - Hospital, schools, Poplar Bluff Industrial Park
- Preference for easy to use and reliable system, short wait times, short travel times



How Options Were Developed



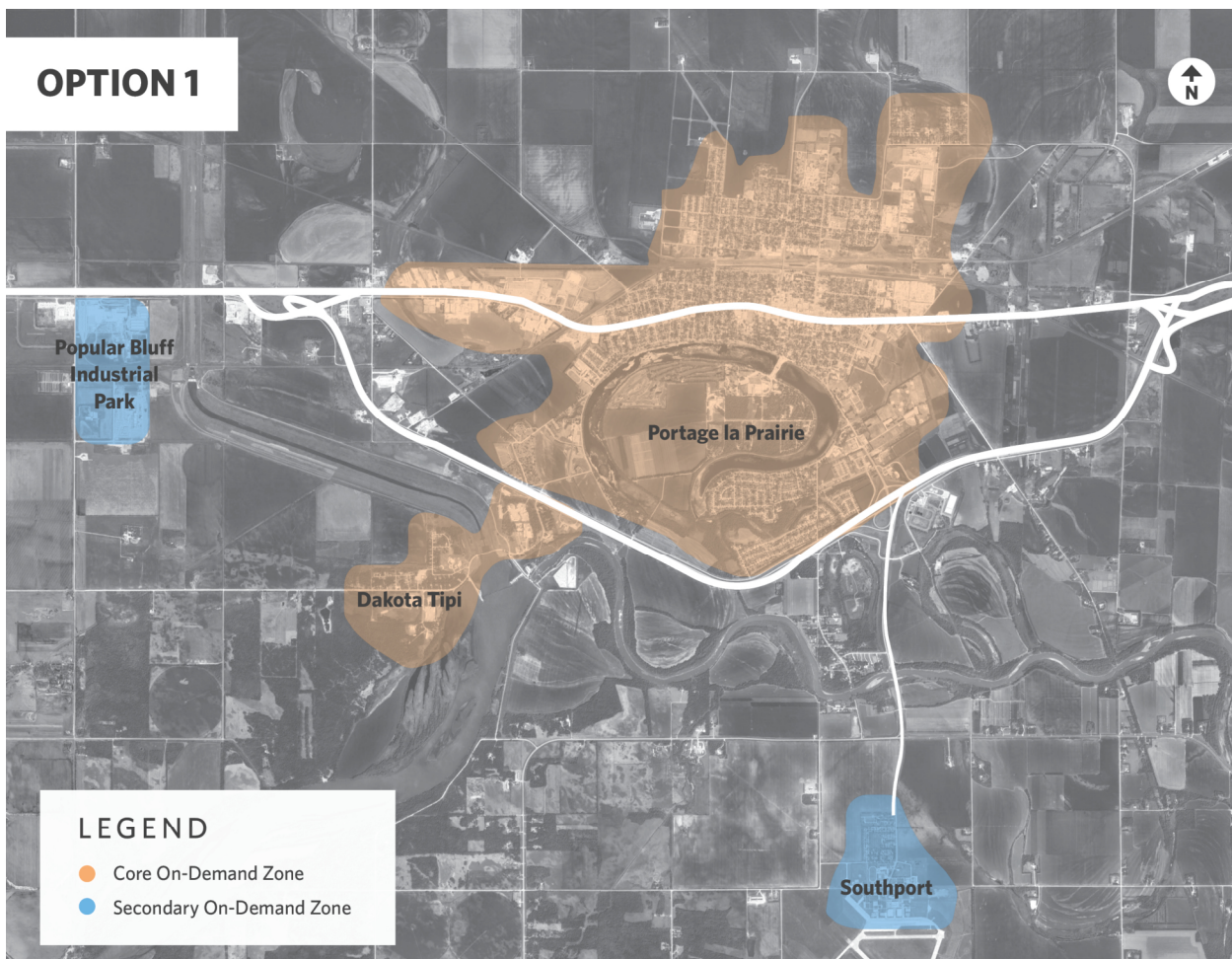
Travel Needs Assessment

- Analyzed travel patterns in and around Portage la Prairie on weekdays and weekends, including Long Plain, Dakota Tipi and industrial areas.
- **West End Commercial** and **Downtown** have the most activity, followed by residential areas.
- Less travel to Hospital, Poplar Bluff Industrial Park, Southport, the Island, Rotary Republic Park.



Phase 2 Engagement | [Online Webinar](#)

Option 1 – Fully On-Demand



Capacity for Riders

- Best for lower demand (ridership), testing new service

Accessible

- Transit coverage can include the entire community, nearby First Nations and key employment areas.
- Residents without smart phones or credit cards can access via call in centres and pay with cash or pass

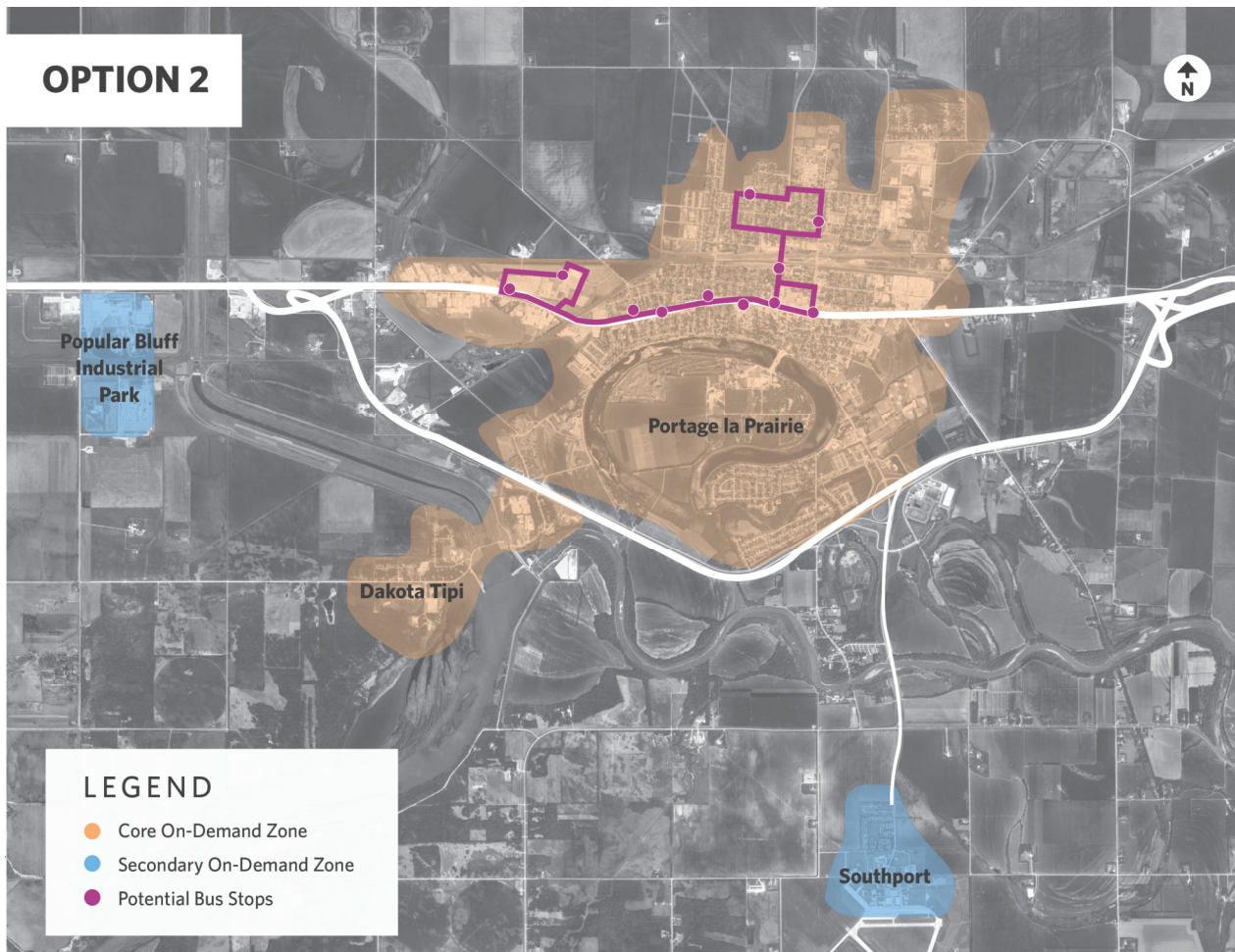
Sustainable

- Low mode shift potential; priority on mobility for people who do not have access to a vehicle

Flexible

- Very flexible. Service can be adjusted with minimal effort and service matches demand.

Option 2 – Hybrid Fixed and On-Demand



Capacity for Riders

- For medium demand, when demand in primary corridor exceeds capacity of an on-demand system.

Accessible

- Same as on-demand, transit coverage can include the entire community, nearby First Nations and key employment areas.
- Residents without smart phones or credit cards can access via call in centres and pay with cash or pass

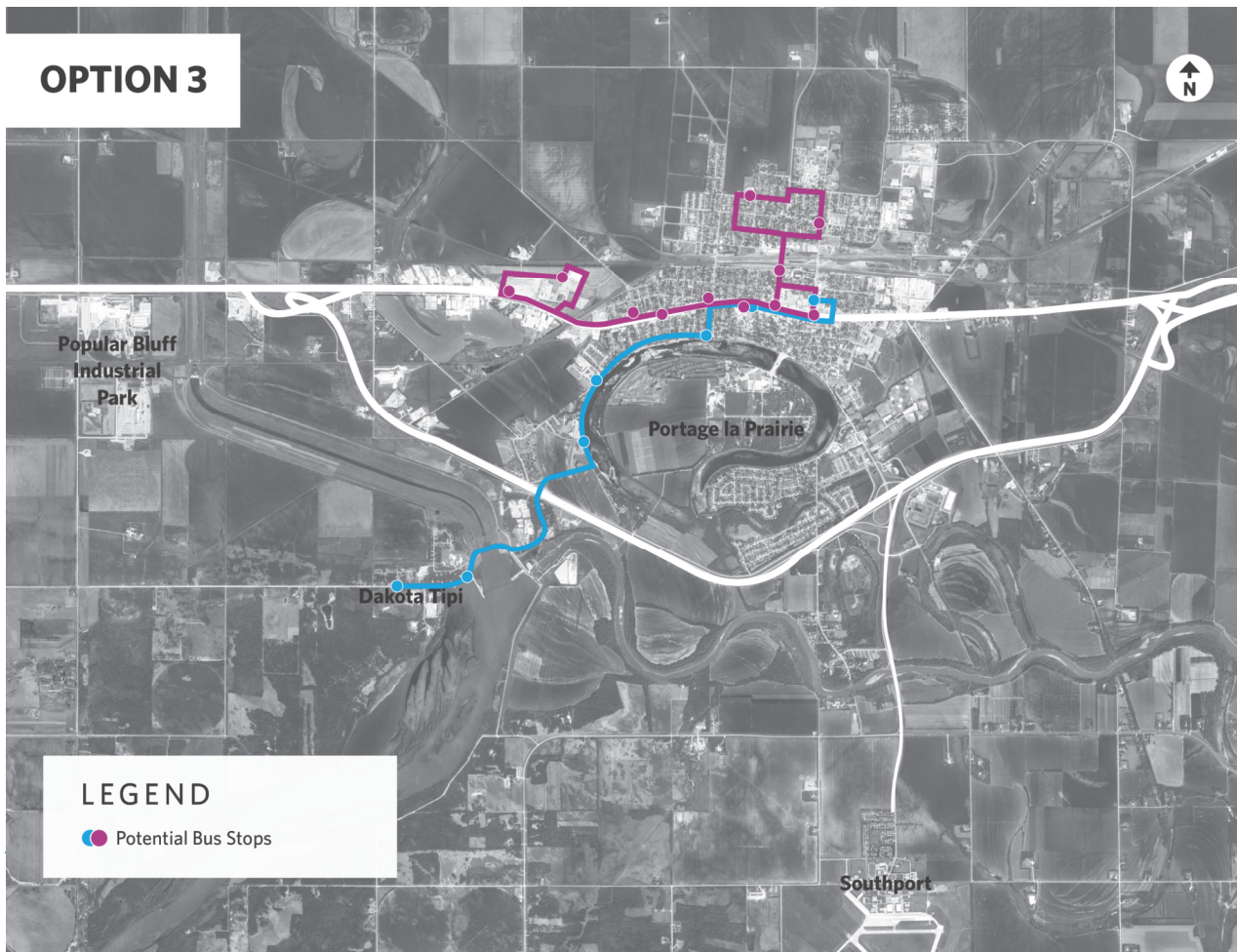
Sustainable

- Modest mode shift potential in primary corridor; priority on mobility for people who do not have access to a vehicle

Flexible

- Most flexible. Fixed route accommodates situations when on-demand cannot support ridership.

Option 3 – Fixed Routes



Capacity for Riders

- For high demand, when demand in primary corridors exceeds capacity of on-demand system.

Accessible

- Limited transit coverage; some parts of community will not have access to transit.
- Fixed routes focus on high ridership corridors and/or priority destinations for access.

Sustainable

- Modest mode shift potential in primary corridors.
- Limited mobility for people or destinations not adjacent to routes and stops.

Flexible

- Least flexible. Changes to service require significant planning, scheduling, communication and possible infrastructure.

Summary of Transit Options



**Option 1:
On-Demand**



**Option 2:
Hybrid Fixed and On-Demand**



**Option 3:
Fixed Routes**

	Option 1: On-Demand	Option 2: Hybrid Fixed and On-Demand	Option 3: Fixed Routes
CAPACITY FOR RIDERS The number of peak and daily riders that can be accommodated on the system	Low	Medium-High	High
ACCESSIBLE Improve access to opportunities and activities for those with limited travel options	<ul style="list-style-type: none"> Transit coverage can include the entire community, nearby First Nations and key employment areas. Residents without smart phones or credit cards can access via call in centres and pay with cash or pass 	<ul style="list-style-type: none"> Transit coverage is the same as On-demand, but with fixed-route providing service in higher demand corridor. 	<ul style="list-style-type: none"> Limited transit coverage Fixed routes focus on higher ridership or higher priority corridors
SUSTAINABLE Realize environmental benefits through mode shift and alternative fuel technology	<ul style="list-style-type: none"> Low mode shift; priority on mobility for people who do not have access to an automobile Alternative fuel technology possible 	<ul style="list-style-type: none"> Potential for modest mode shift; also provides mobility for people who do not have access to an automobile. Alternative fuel technology possible 	<ul style="list-style-type: none"> Potential for modest mode shift. Limited mobility for people who are not travelling near the transit stops. Alternative fuel technology possible.
FLEXIBLE The transit system is flexible and can adapt to changing demand, serve different times of day, or serve different destinations.	<ul style="list-style-type: none"> Very flexible. Service can be adjusted with minimal effort, as needed. When demand is exceeded, wait times and travel times increase 	<ul style="list-style-type: none"> Most flexible for situations when on-demand cannot support the amount of ridership. 	<ul style="list-style-type: none"> Inflexible. Changes to service require significant planning, scheduling communication, and possibly infrastructure

