

CITY OF PORTAGE LA PRAIRIE
By-Law No. 08-8413

BEING A BY-LAW OF THE CITY OF PORTAGE LA PRAIRIE to open Royal Road Causeway as a municipal road; and

WHEREAS Section 289 of The Municipal Act provides as follows:

“A municipality may open land for public use as a municipal road by

- (a) passing a by-law opening the road; and
- (b) registering the by-law and a plan at the appropriate land titles office.”

AND WHEREAS it is deemed necessary and desirable to open a municipal road over, upon and across the lands hereinafter described;

NOW THEREFORE THE COUNCIL OF THE CITY OF PORTAGE LA PRAIRIE ENACT AS FOLLOWS:

1. THAT a municipal road be and is hereby opened and established over, upon and across the lands described as follows:

All those portions of River Lots 64 and 72, Parish of Portage la Prairie, in Manitoba, taken for Royal Road as shown on a plan of survey prepared by David Sinclair McBurney of the City of Portage la Prairie, Manitoba Land Surveyor, deposited in the Winnipeg land Titles office as Deposit No.1425/2008;

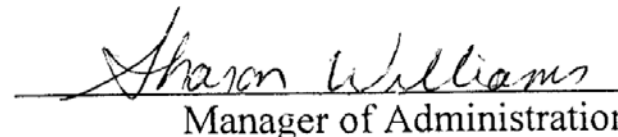
and the said lands are hereby dedicated to the public for that purpose.

2. THAT the said plan of survey is hereby adopted and approved, and the City Manger is authorized and directed to endorse the aforementioned plan of survey for identification, placing thereon his signature, under the corporate seal of the municipality, together with a reference to this by-law.

DONE AND PASSED AS A BY-LAW OF THE CITY OF PORTAGE LA PRAIRIE AT 97 SASKATCHEWAN AVENUE EAST, PORTAGE LA PRAIRIE, IN THE PROVINCE OF MANITOBA THIS 8th DAY OF December, 2008.

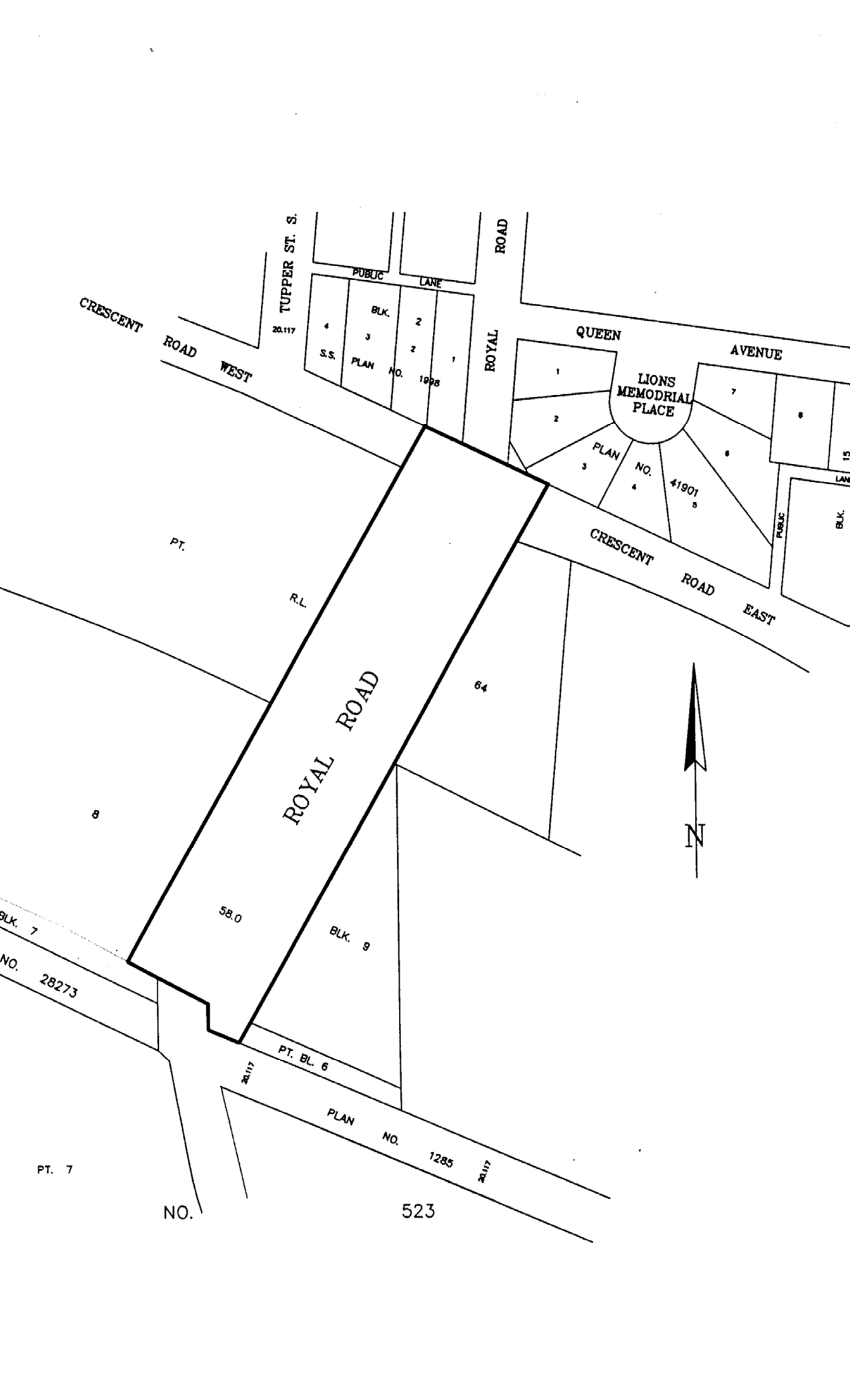


Deputy Mayor



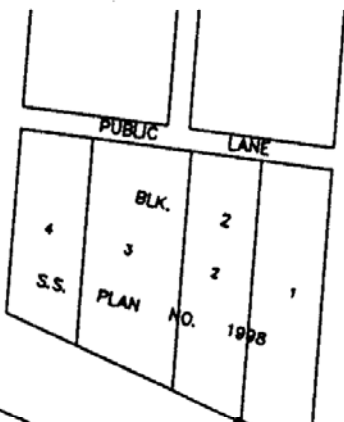
Manager of Administration

READ A FIRST TIME the 19th day of November, 2008
READ A SECOND TIME the 8th day of December, 2008
READ A THIRD TIME the 8th day of December, 2008



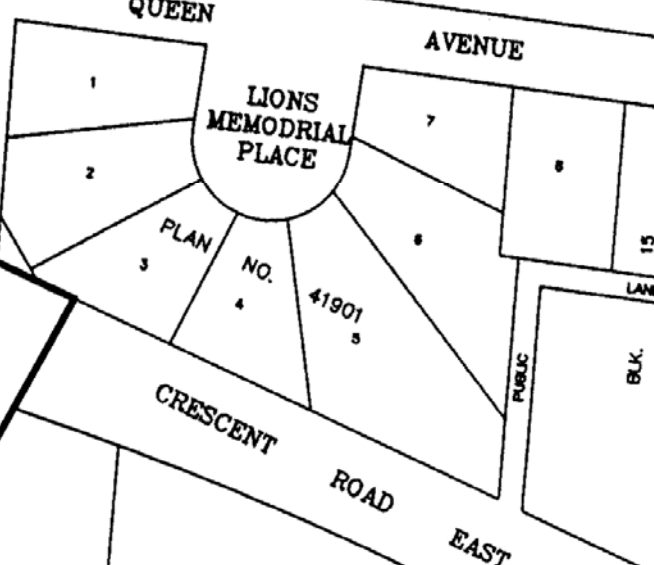
CRESCENT ROAD WEST

TUPPER ST. S.
20117



ROYAL ROAD

QUEEN AVENUE



CRESCENT ROAD EAST

PT.

R.L.

ROYAL ROAD

64



8

58.0

BLK. 9

BLK. 7
NO. 28273

PT. BL. 6

PLAN NO. 1285

PT. 7

NO.

523